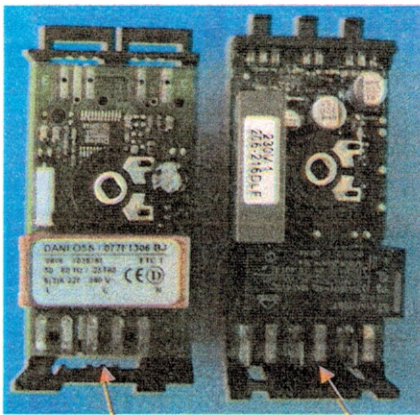


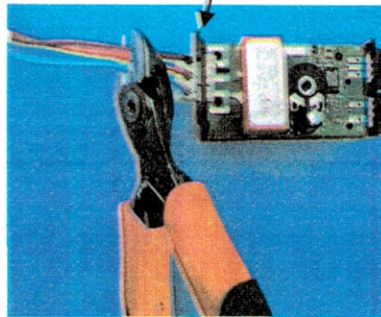
Service bulletin



ETC1
Plastconnector

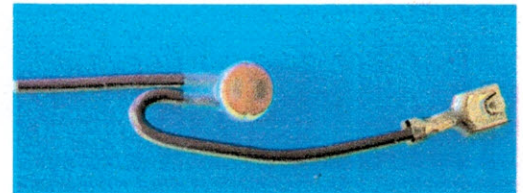
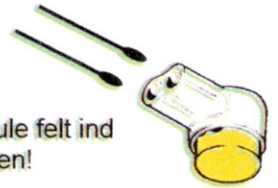
ETC1H
Spadeconnector

Klip ledningerne af så de er fri af den gamle plastconnector!

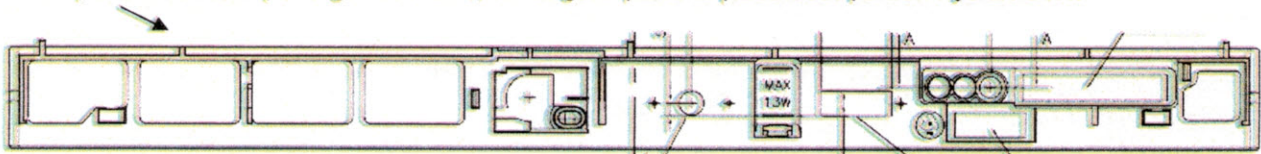


Derefter samles den afklippede ledning i en Scotchlok UY2 connector sammen med den medfølgende ledning i servicekittet!

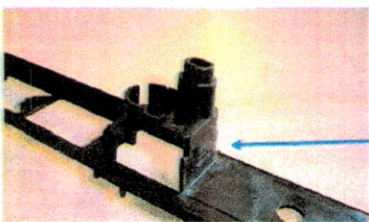
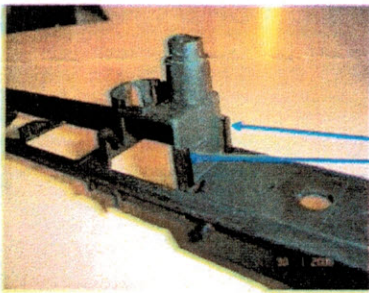
Klem det gule felt ind i connectoren!



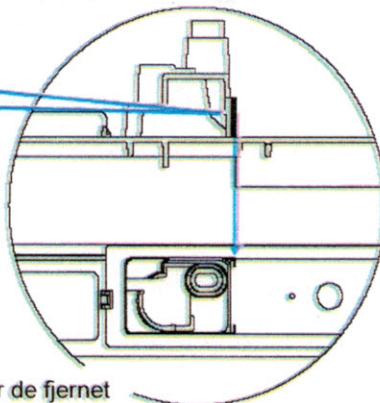
El-panelet tilrettes på følgende måde, for at gøre plads til plasthuset på den nye ETC1H.



De 2 vinkler fjernes. De mørke felter på tegningen.



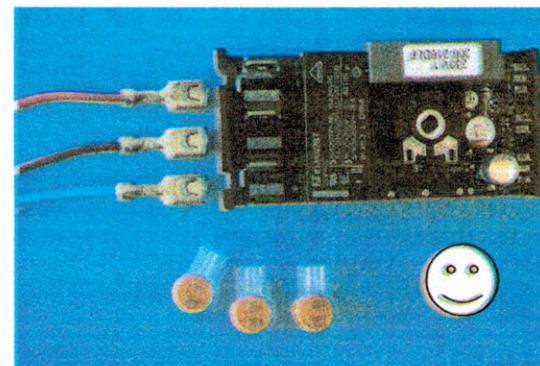
Her er de fjernet



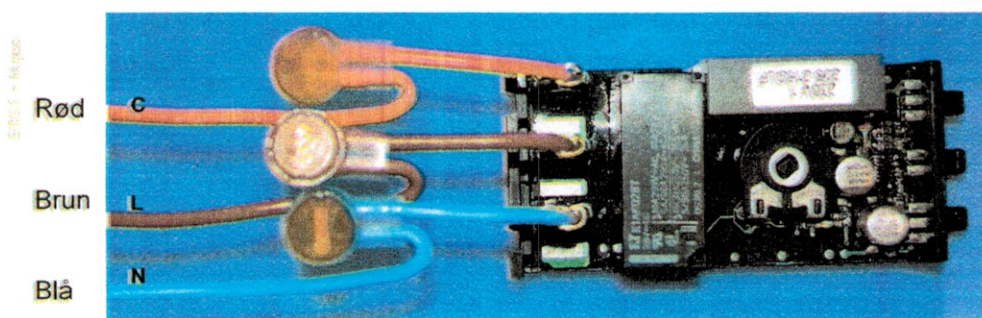
Servicekittet består af:



- 1 x ETC1H
- 1 x Rød ledning med spadesko
- 1 x Brun ledning med spadesko
- 1 x Blå ledning med spadesko
- 3 x Scotchlok UY2 connector



Ledninger monteres som følgende.



ETC1H - 44 pages

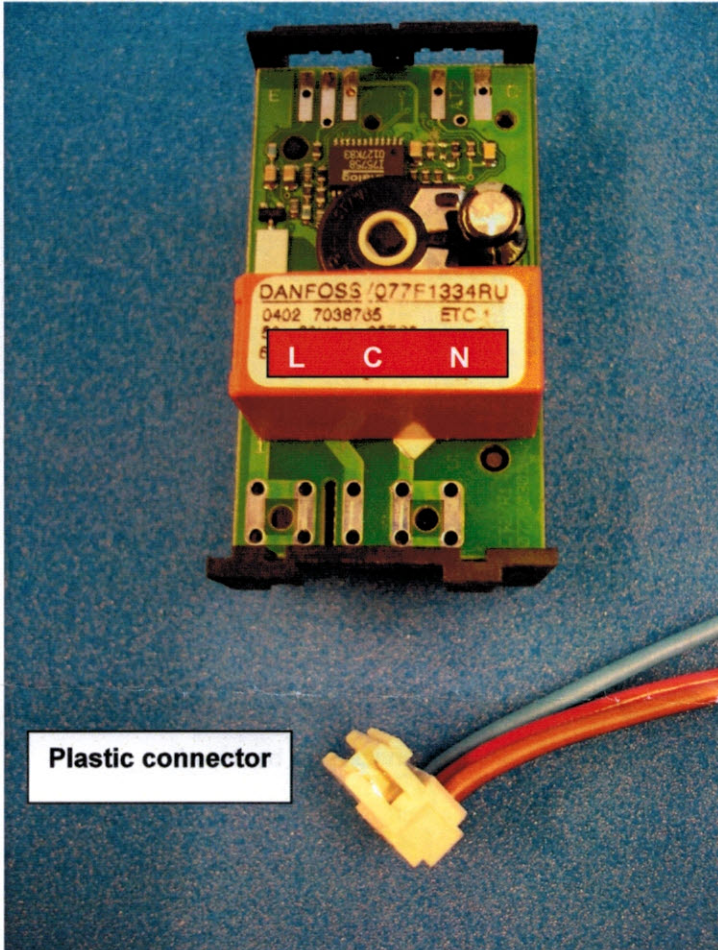
NOTE : IMPORTANT

VESTFROST

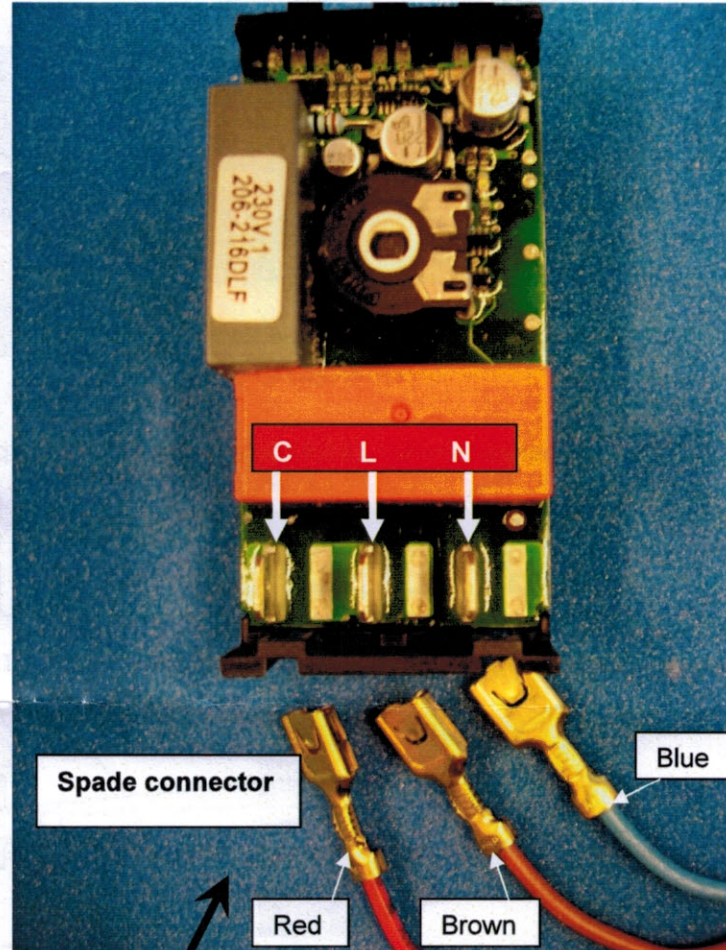
Wire fitting instruction ETC1 → ETC1H

bulletin

Electronic Thermostat ETC1



Electronic Thermostat ETC1H



C = Red wire L = Brown wire N = Blue wire